



Fellow Supreme



To secure that the walking-aid will function safely for the user, once per year review of the walking-aid should be done. Therefore is the following interventions recommended.

Cleaning

When cleaning the walker it is recommended machine washing, 60 degrees for 10 minutes. When using a pressure washer, do not wash directly to the bearings. In addition to machine washing, regular cleaning with a mild cleanser is recommended. **Note!** Do NOT use thinner, petrol or other solvents.

Post treatment

After washing, all connections, tight spaces and drainage holes should be blown dry and sprayed with thin oil. If degreaser is used, should the moving parts be lubricated.

The Paint

Control damages to the paint. To prevent corrosion, improve scratches. Touch-up paint can be ordered from Human Care HC AB.

Pipe frame

Control weldings and screw attaches. If the corrosion is extensive shall the rollator be replaced.



Handle

Must be fixed. Make sure the handle pipes can be pushed down to the chassis. Change the grip if needed.

Brakes

Control that both brakes and parkingbrakes are working. Wires should be intact and stapped to the chassis.

Wing nut

Control function.

CE-marking

Make sure that the CE-marking is still there and readable.

Reflectors

Make sure the reflectors are still there and visible.

Wheels

Make sure the wheels are not worn-out and are spinning easily without any noise.

Hub caps

Make sure that they are not missing.

Front forks

Make sure that the bearings is firmly attached. Check the front fork inertia by allowing the wheel to swing between 3 and 9 o'clock. Both wheels shall swing 2 to 4 times with max 2 swings difference between each wheel. The inertia can be adjusted by adjusting the nut on the top under the hub cover.

Seat

Make sure the seat is kept in place and screws are tightened. The seat must be able to tip up and down.

Folding mechanism

Should be intact and the locking should function.

Stability

Control that all wheels are steadily on the ground and that there are no chassis distortion.

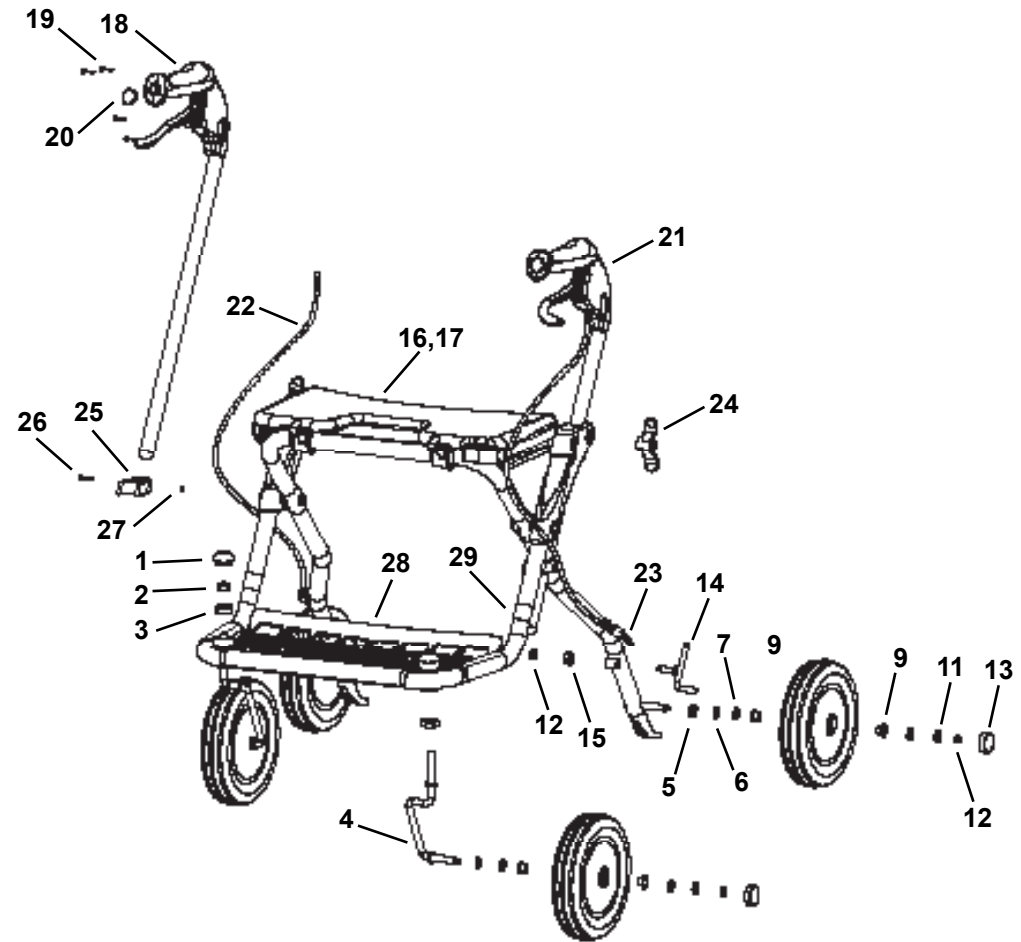
Test driving

Make a final control by test driving.



RECONDITIONING MANUAL

No	Designation	Quantity	Art. no	Other information
Handle				
18	Grip	2	AL-10153	
19	Screw	8	00897	
20	Knob	2	AL-10159	
21	Handle tube complete	1	AL-10168-L	Left (handle complete, wire complete, screws, handle tube, tube end).
		1	AL-10168-R	Right (handle complete, wire complete, screws, handle tube, tube end).
Wire complete				
22	Wire	2	00891	Complete with adjustment screw.
	Housing	2		
23	Brake spring	2	AL-10142	
24	Wing nut	2	20-052	Lubricate the wing nut when needed.
Handle height memory				
25	Handle height memory	2	AL-10096	
26	Screw	2		
27	Nut	2		
28	Mesh shelf	1	AL-10150	
29	Reflex	4	00028	
	Touch-up paint	1	F4	



• Årstaängsvägen 21C, SE-117 43 Stockholm, Sweden •
 • Tel. +46(0)8 - 510 132 00 • Fax +46(0)8 - 655 35 10 •
 • www.humancaregroup.com •