




Carl-Oskar

 To secure that the walking-aid will function safely for the user, once per year review of the walking-aid should be done. Therefore is the following interventions recommended.

Cleaning

When cleaning the walker it is recommended machine washing, 60 degrees for 10 minutes. When using a pressure washer, do not wash directly to the bearings. In addition to machine washing, regular cleaning with a mild cleanser is recommended. **Note!** Do NOT use thinner, petrol or other solvents.

Post treatment

After washing, all connections, tight spaces and drainage holes should be blown dry and sprayed with thin oil. If degreaser is used, should the moving parts be lubricated.

The Paint

Control damages to the paint. To prevent corrosion, improve scratches. Touch-up paint can be ordered from Human Care HC AB.

Pipe frame

Control weldings and screw attaches. If the corrosion is extensive shall the rollator be replaced.



Handle

Must be fixed. Make sure the handle pipes can be pushed down to the chassis. Change the grip if needed. **Note!** Only use alcohol without moisturizing agents.

Brakes

Control that both brakes and parkingbrakes are working. Wires should be intact and strapped to the chassis.

Wing nut

Control function.

Reflectors

Make sure the reflectors are still there and visible.

CE-marking

Make sure that the CE-marking is still there and readable.

Wheels

Make sure the wheels are not worn-out and are spinning easily without any noise.

Lubrication

Gatebushings and hinges should be working without any noise. Lubricate when needed.

Front forks

Make sure that the ball bearings is firmly attached. Check the front fork inertia by allowing the wheel to swing between 3 and 9 o'clock. Both wheels shall swing 3 to 10 times with max 2 swings difference between each wheel. The inertia can be adjusted by adjusting the nut on the top under the hub cover. **Note!** The nut on the inside of the fork must not be touched.

Folding mechanism

Should be intact and the locking should function.

Seat

Make sure the seat is kept in place and screws are tightened.

Stability

Control that all wheels are steadily on the ground and that there are no chassis distortion.

Test driving

Make a final control by test driving.

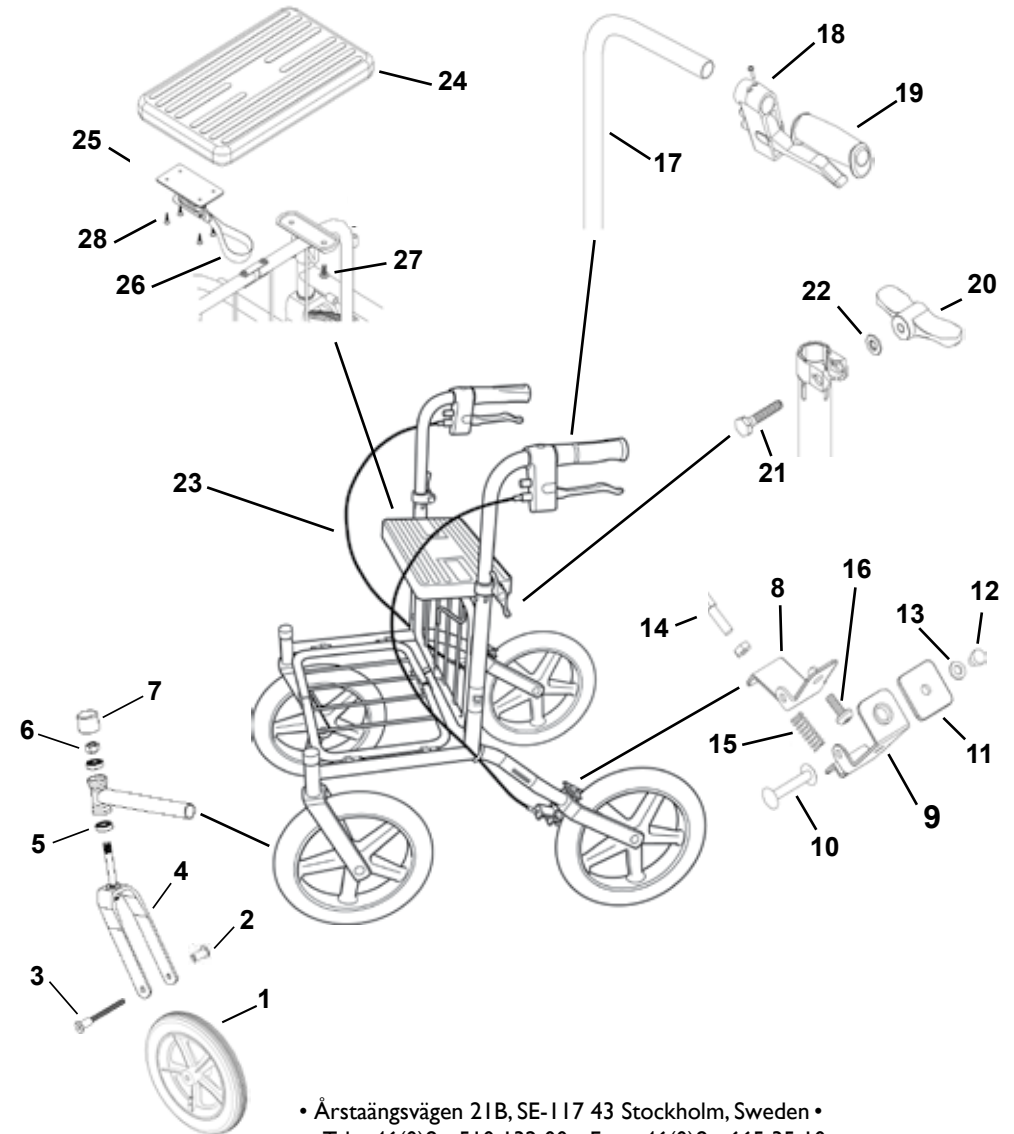


RECONDITIONING MANUAL

23	Wire complete		89050	
	Wire housing			
	Wire			
	Wire lock			
	Wire end			
	Seat kit		89020	<i>Not for Carl-Oskar reinforced.</i>
24	Seat			
25	Gate lock			
26	Fold loop			
27	Screw M6x20	2		
28	Screw to gate lock	4		
	Seat complete		89070	<i>Not for Carl-Oskar reinforced.</i>
24	Seat			
27	Screw M6x20	2		
	Tube protection		50949	
26	Fold loop		10-009	
	Gate lock kit		10-018	
25	Gate lock			
28	Screw to gate lock	4		
26	Fold loop			
	Reflex		00028	
	Touch-up paint		F2	

Spareparts reinforced Carl-Oskar (Art. no 61225, 61325, 61425)

	Rear wheel kit		89089	<i>Pin bolt and wheel nut must be exchanged when disassembling the wheel.</i>
1	Complete wheel			
2	Wheel nut			
	Pin bolt			
	Rear wheel kit air pumped		89088	<i>Pin bolt and wheel nut must be exchanged when disassembling the wheel. Tyre pressure max 2,0 bar.</i>
	Complete wheel			
2	Wheel nut			
	Pin bolt			
	Handle		89033	<i>When changing the handle, the upper part of the reinforcement beam must be removed.</i>
	Pin bolt & wheel nut for rear wheel		89091	<i>Pin bolt and wheel nut must be exchanged when disassembling.</i>
2	Wheel nut			
	Pin bolt			



• Årstaängsvägen 21B, SE-117 43 Stockholm, Sweden •
 • Tel. +46(0)8 - 510 132 00 • Fax +46(0)8 - 665 35 10
 • www.humancaregroup.com •